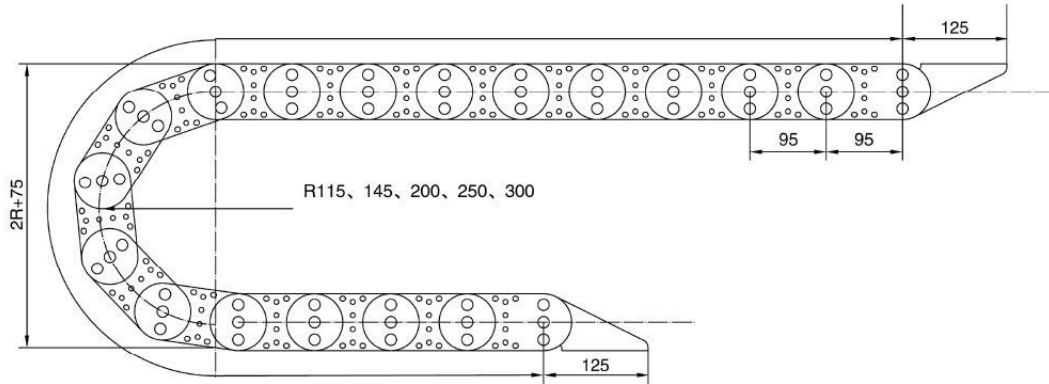
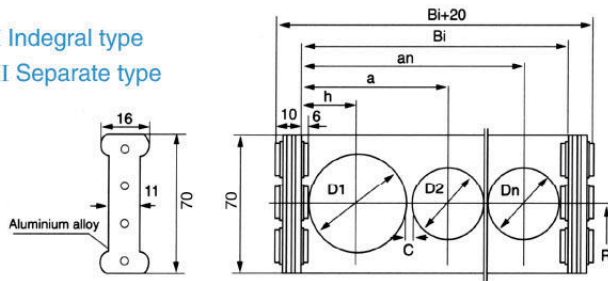


TL95

Fixing Dimensions Drawing Steel Drag Link of Model TL95

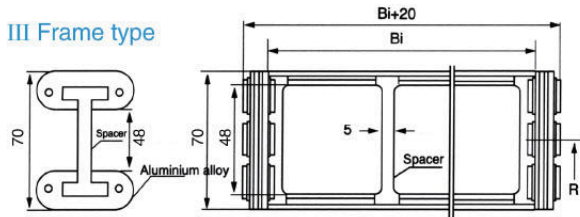


I Integral type
II Separate type



Supporting board I Integral type, II Separate type

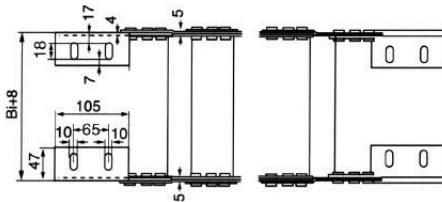
III Frame type



Supporting board III, Frame type

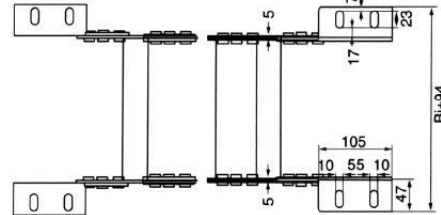
Standard connection

Standard connection

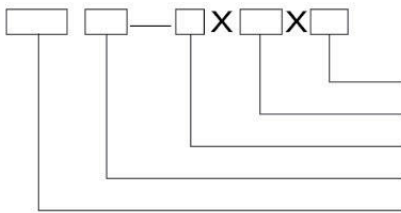


Manner of connection A

Manner of connection B



Legends



L=length of drag chains

Bi=width of supporting board of drag chain

Bending radius

Supporting Board Type I, II, III

Model No.

Example for an order

Drag chain model number TL95, supporting board III type, bend radius $R=250$, supporting board width $Bi=300$ length $L=7500$

Drag chain TL95 III -250 × 300 × 7500

I-type integral type of support board

II-type separate type of support board

III-type the upper one and the lower one are made of aluminium with spacer inside