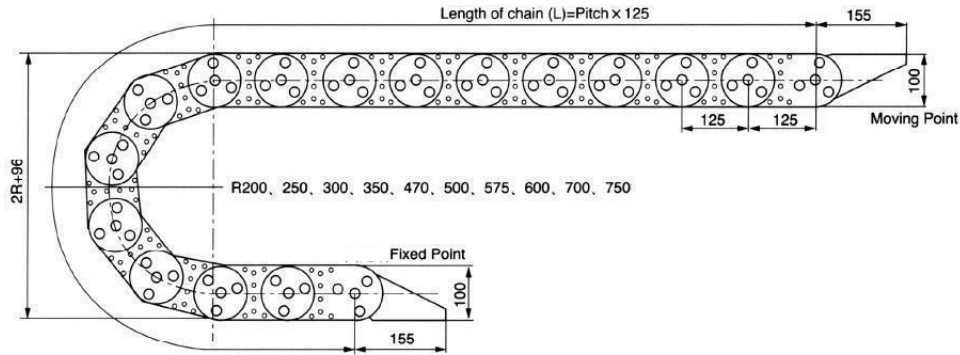
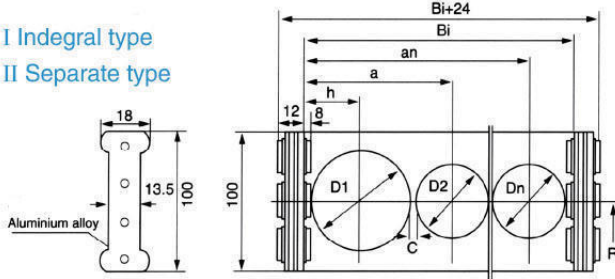


TL125

Fixing Dimensions Drawing Steel Drag Link of Model TL125

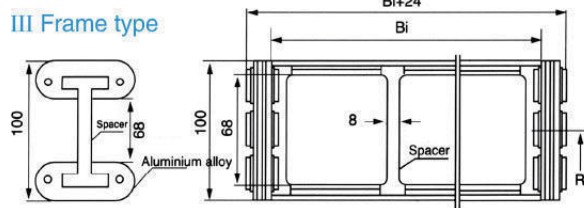


I Integral type
II Separate type



Supporting board I Integral type, II Separate type

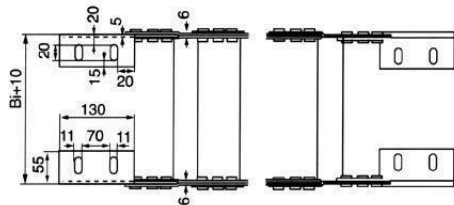
III Frame type



Supporting board III, Frame type

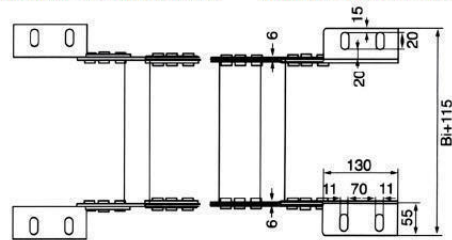
Standard connection

Standard connection

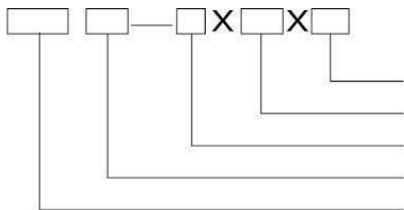


Manner of connection A

Manner of connection B



Legends



- L=length of drag chains
- Bi=width of supporting board of drag chain
- Bending radius
- Supporting Board Type I, II, III
- Model No.

Example for an order

Drag chain model number TL125, supporting board III type, bend radius R=250, supporting board width Bi=300 length L=7800
 Drag chain TL125 III –250 × 300 × 7800
 I–type integral type of support board
 II–type separate type of support board
 III–type the upper one and the lower one are made of aluminium with spacer inside