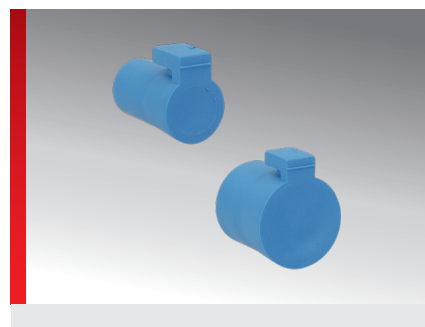
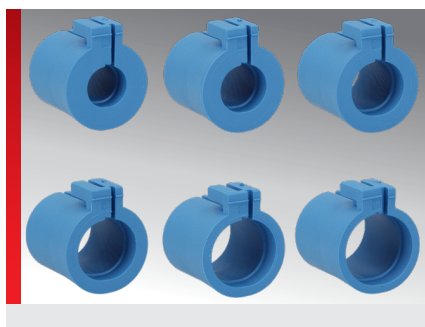
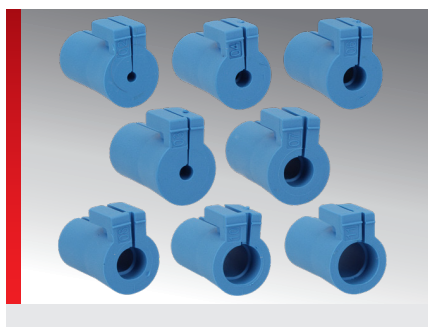


Cable entry grommets Type KDT/X FDA








PRODUCT INFORMATION

1-piece cable entry grommet for pre-assembled cables combined with the cable entry system KDL/H-VA FDA made of FDA compliant material for the food industry.

- Pre-assembled cables can be easily inserted or fed through e.g. in control

- cabinets.
- Grommets are retrofitted around the cable.
- Made of FDA compliant material especially for the food industry

SPECIFICATIONS

	TPE
	-40 – 80 °C
	ISO 4852-2
	RoHS
	Made in Germany

Type	Order No.	Colour	for Ø mm	For opening Small / medium / large	No. of openings	MOQ qty.
Grommet, small						
KDT/X-FDA 02, 02-03	87141710	Blue	2 – 3	• / - / -	1	12
KDT/X-FDA 03, 03-04	87141712	Blue	3 – 4	• / - / -	1	12
KDT/X-FDA 04, 04-05	87141714	Blue	4 – 5	• / - / -	1	12
KDT/X-FDA 05, 05-06	87141716	Blue	5 – 6	• / - / -	1	12
KDT/X-FDA 06, 06-07	87141718	Blue	6 – 7	• / - / -	1	12
KDT/X-FDA 07, 07-08	87141720	Blue	7 – 8	• / - / -	1	12
KDT/X-FDA 08, 08-09	87141722	Blue	8 – 9	• / - / -	1	12
KDT/X-FDA 09, 09-10	87141724	Blue	9 – 10	• / - / -	1	12
KDT/X-FDA 10, 10-11	87141726	Blue	10 – 11	• / - / -	1	12
KDT/X-FDA 11, 11-12	87141728	Blue	11 – 12	• / - / -	1	12
BTK/X-FDA Dummy grommet	87141770	Blue		• / - / -		12
Grommet, medium						
KDT/X-FDA 12, 12-13	87141730	Blue	12 – 13	- / • / -	1	4
KDT/X-FDA 13, 13-14	87141732	Blue	13 – 14	- / • / -	1	4
KDT/X-FDA 14, 14-15	87141734	Blue	14 – 15	- / • / -	1	4
KDT/X-FDA 15, 15-16	87141736	Blue	15 – 16	- / • / -	1	4
KDT/X-FDA 16, 16-17	87141738	Blue	16 – 17	- / • / -	1	4
KDT/X-FDA 17, 17-18	87141740	Blue	17 – 18	- / • / -	1	4
KDT/X-FDA 18, 18-19	87141742	Blue	18 – 19	- / • / -	1	4
KDT/X-FDA 19, 19-20	87141744	Blue	19 – 20	- / • / -	1	4
KDT/X-FDA 20, 20-21	87141746	Blue	20 – 21	- / • / -	1	4
KDT/X-FDA 21, 21-22	87141748	Blue	21 – 22	- / • / -	1	4
BTG/X-FDA Blindtülle mittel	87141766	Blue		- / • / -		4
Grommet, large						
KDT/X-FDA 22, 22-23	87141750	Blue	22 – 23	- / - / •	1	4

Cable entry grommets Type KDT/X FDA

Type	Order No.	Colour	for Ø mm	For opening Small / medium / large	No. of open-ings	MOQ qty.
KDT/X-FDA 23, 23-24	87141752	Blue	23 – 24	- / - / •	1	4
KDT/X-FDA 24, 24-25	87141754	Blue	24 – 25	- / - / •	1	4
KDT/X-FDA 25, 25-26	87141756	Blue	25 – 26	- / - / •	1	4
KDT/X-FDA 26, 26-27	87141758	Blue	26 – 27	- / - / •	1	4
KDT/X-FDA 27, 27-28	87141760	Blue	27 – 28	- / - / •	1	4
KDT/X-FDA 28, 28-29	87141762	Blue	28 – 29	- / - / •	1	4
KDT/X-FDA 29, 29-30	87141764	Blue	29 – 30	- / - / •	1	4
BTG/XL-FDA Dummy grommet large	87141765	Blue		- / - / •		4



TPE



Temperature / temperature range

-40 – 80 °C



According to EN -2-1



RoHS (EC Directive 2011/65/EU)



Made in Germany

All details given in our sales brochures and catalogues, as well as the information available online, are based on our current knowledge of the products described.

The electronic data and files made available by Murrplastik, particularly CAD files are based on our current knowledge of the product described.

A legally binding assurance of certain properties or the suitability for a certain purpose can not be determined from this information.

All information with respect to the chemical and physical properties of Murrplastik products, as well as application advice given verbally, in writing or by tests, is given to the best of our knowledge.

They do not release the buyer from the obligation to carry out his own tests and trials in order to determine the concrete suitability of the products for the intended purpose.

Murrplastik accepts no responsibility for the available information being up-to-date, correct or complete. Neither do we accept responsibility for the quality of this information.

Murrplastik accepts no liability for damage caused as a result of using our products.

Murrplastik reserves the right to make technical changes and improvements through constant further development of products and services.

Our General Terms and Conditions apply.

© Murrplastik Systemtechnik GmbH • proID_134216~20201208~890287~kdh_kdt_x_fda